

Name: _____

Score: _____

Hobbies

A. Match the words that are the same.

- | | | | |
|--------------|---|---|------------|
| 1. relatives | • | • | a. stop |
| 2. end | • | • | b. family |
| 3. forest | • | • | c. next to |
| 4. beside | • | • | d. trees |
| 5. stuck | • | • | e. caught |

B. Match the words to make a sentence. Then write the sentence.

6.  I eat • • her kite • • a week.

7.  She flies • • beef twice • • in May.

6. _____

7. _____



Hobbies

C. Read and answer.

Fred plays in the forest twice a week.

He climbs trees.

One day, he gets his foot stuck.

It is caught between two branches.

He pulls hard on his foot.

One of the branches moves.

Fred looks at it.

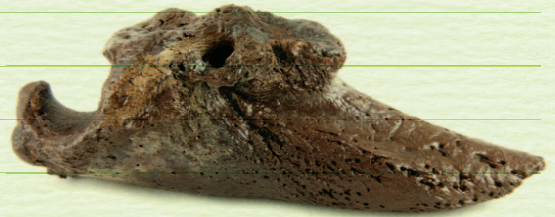
It is not part of a tree.

It is a dinosaur bone!

He takes a picture beside it.

He mails it to a museum.

Now everyone can see Fred's dinosaur bone!



8. This reading is about _____.
 - a. finding a dinosaur
 - b. finding a bone
 - c. finding a picture
 - d. finding a lost boy
9. Fred _____ not keep the bone.
 - a. do
 - b. does
 - c. doing
 - d. to do
10. At first, what does Fred think the bone is?
 - a. A foot
 - b. A dinosaur
 - c. A museum
 - d. A branch