



Let's Smile

Workbook





Contents

1	Daily Routine CLIL Math	6
2	Getting Around CLIL Social Studies	12
WORLD LINK 1	High-Speed Trains	18
3	On Vacation CLIL Science	20
4	Vacation Activities CLIL Social Studies	26
WORLD LINK 2	Holidays around the World	32
5	Wonderful Weekends CLIL Physical Education	34
6	Fun Hobbies CLIL Art	40
WORLD LINK 3	Instruments in the Orchestra	46



7

At Home 48
CLIL Health

8

At the Picnic 54
CLIL Science

WORLD LINK 4

Old Board Games 60

9

Winter Fun 62
CLIL Art

10

Summer Fun 68
CLIL Science

WORLD LINK 5

Animals in Winter 74

11

Our Future 76
CLIL Math

12

Favorite Things to Do 82
CLIL History

WORLD LINK 6

Smart Robots 88

Characters & Theme Song

Come on, come on!
The bus is here.
It's time to go
And say hello.

Come on, come on!
It's time for class.
Just try.
You'll be surprised!

Let's smile!
We'll play together.
Let's smile!
Have fun forever.
S-M-I-L-E
S-M-I-L-E



Smiley



Theo

Come on, come on!
It's time to explore.
We'll do it together.
It's an adventure!

Let's smile!
And lighten up.
Let's smile!
Come learn with us.
S-M-I-L-E
S-M-I-L-E

We'll smile!
S-M-I-L-E
Let's smile!
S-M-I-L-E

S-M-I-L-E
S-M-I-L-E
Let's smile!

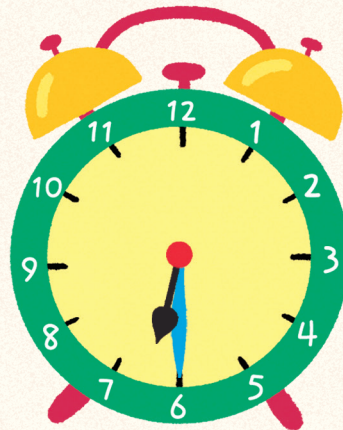
Sally



1 Daily Routine

Lesson 1

A Choose and write the number.



- 1 She comes home.
- 4 She goes to school.
- 7 They eat dinner.

- 2 She has breakfast.
- 5 They eat lunch.
- 8 She goes to bed.

- 3 She gets up.
- 6 They finish school.

B Look and match.

1 6:00

2 6:05

3 6:15

4 6:30

It's six oh five.

It's six thirty.

It's six fifteen.

It's six o'clock.

C Look and write.



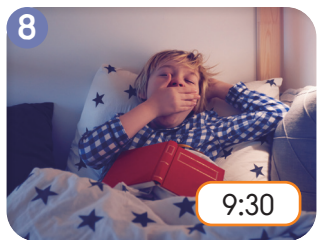
1 What time does she get up?

She gets up at six thirty.

2 What time does he have breakfast?

3 What time do they go to school?

4 What time do they eat lunch?



5 What time do they finish school?

They finish school at three thirty.

6 _____

They come home at four o'clock.

7 _____

They eat dinner at seven o'clock.

8 _____

He goes to bed at nine thirty.

Lesson 2

A Choose and write the number.

1 It's six fifteen.

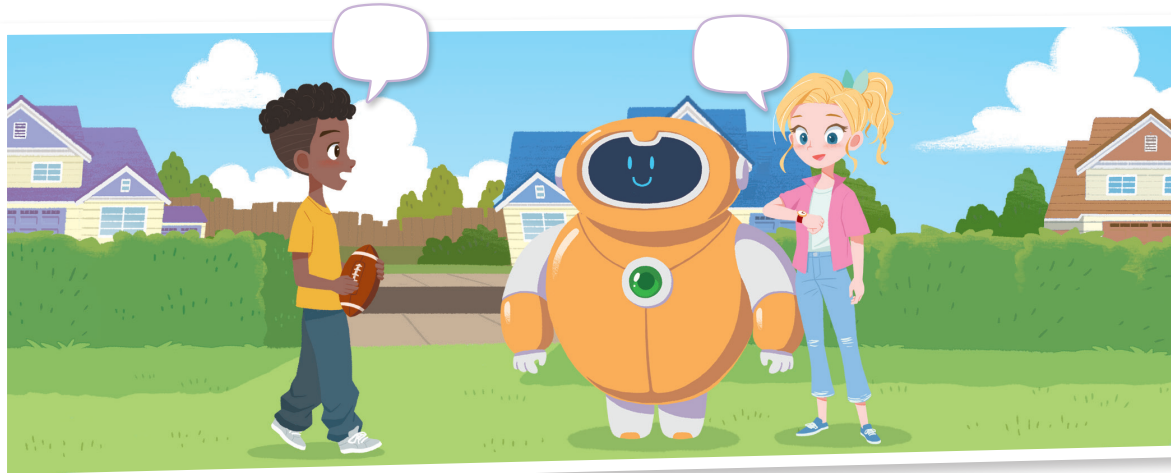
2 I should go home too.

3 See you tomorrow.

4 Yes. What's the matter?

5 What time is it?

6 Goodbye.



Oh no! It's six fifteen already?



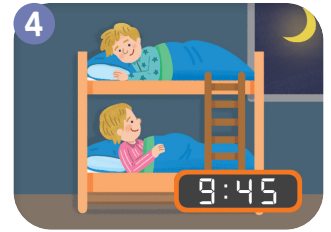
I should go home.
I'm late for dinner.



See you at school.



B Read and write.



1 What time do they finish school?

2 What time does he come home?

3 What time do they eat dinner?

4 What time do they go to bed?

C Look and write.



Q _____

A He gets up at seven ten.



Q _____

A She has breakfast at seven twenty.



Q _____

A She goes to school at eight thirty.



Q _____

A They eat lunch at twelve fifteen.

A Read and write.

Units of Time



- 1 1 minute = _____ seconds 2 1 hour = _____ minutes
- 3 1 day = _____ hours 4 1 week = _____ days
- 5 1 year = _____ weeks 6 1 year = _____ months
- 7 1 year = _____ days

B Convert and write the number.

1 2 hours = _____ minutes

$2 \times 60 = 120$

2 84 days = _____ weeks

3 15 minutes = _____ seconds

4 300 minutes = _____ hours

5 3 years = _____ weeks

6 12 weeks = _____ days

7 4 years = _____ months

8 36 months = _____ years

Unit Link U1

A Look and write.



She _____ at 6:50.



He _____ at 7:35.



They _____ at 8:15.



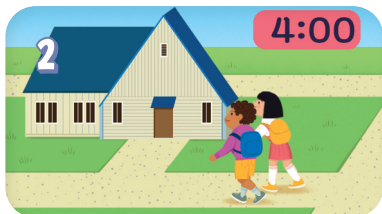
They _____ at 3:20.

B Read and write.



Q What time does she eat lunch?

A _____



Q What time do they come home?

A _____



Q _____

A They eat dinner at seven fifteen.



Q _____

A He goes to bed at ten o'clock.

High-Speed Trains

A Choose and write.

Shinkansen

1



Speed: 320 km/h (200 mph)

Where: _____

Fact: _____

Eurostar

2



Speed: 320 km/h (200 mph)

Where: _____

Fact: _____

Shanghai Transrapid

3



Speed: 430 km/h (267 mph)

Where: _____

Fact: _____

Where

China Europe Japan

Facts

- It is the fastest train in the world.
- It is the first high-speed train in the world.
- It runs between London and Paris through Channel Tunnel.

B Read and circle **True** or **False** about yourself.

1 I like taking the train.

True

False

2 My dad takes the train to work every day.

True

False

3 We take the train to Grandma's house.

True

False

4 Trains are popular in my country.

True

False

5 There is a high-speed train in my country.

True

False

C Write the time.

From	Train Travel Time	To
Seoul 2 : 00	2 hours 40 minutes	Busan 4 : 40
Shanghai 3 : 10	4 hours 18 minutes	Beijing :
Tokyo 4 : 30	2 hours 30 minutes	Osaka :
London 5 : 40	2 hours 16 minutes	Paris :