



Let's Smile

Student Book





Contents

1	Daily Routine CLIL Math	6
2	Getting Around CLIL Social Studies	12
WORLD LINK 1	High-Speed Trains	18
3	On Vacation CLIL Science	20
4	Vacation Activities CLIL Social Studies	26
WORLD LINK 2	Holidays around the World	32
5	Wonderful Weekends CLIL Physical Education	34
6	Fun Hobbies CLIL Art	40
WORLD LINK 3	Instruments in the Orchestra	46



7

At Home 48
CLIL **Health**

8

At the Picnic 54
CLIL **Science**

WORLD LINK 4

Old Board Games 60

9

Winter Fun 62
CLIL **Art**

10

Summer Fun 68
CLIL **Science**

WORLD LINK 5

Animals in Winter 74

11

Our Future 76
CLIL **Math**

12

Favorite Things to Do 82
CLIL **History**

WORLD LINK 6

Smart Robots 88

Scope and Sequence 90

Key Vocabulary and Phrases 92

Characters & Theme Song



Come on, come on!
The bus is here.
It's time to go
And say hello.

Come on, come on!
It's time for class.
Just try.
You'll be surprised!

Let's smile!
We'll play together.
Let's smile!
Have fun forever.
S-M-I-L-E
S-M-I-L-E



Smiley



Theo

Come on, come on!
It's time to explore.
We'll do it together.
It's an adventure!

Let's smile!
And lighten up.
Let's smile!
Come learn with us.
S-M-I-L-E
S-M-I-L-E

We'll smile!
S-M-I-L-E
Let's smile!
S-M-I-L-E

S-M-I-L-E
S-M-I-L-E
Let's smile!

Sally

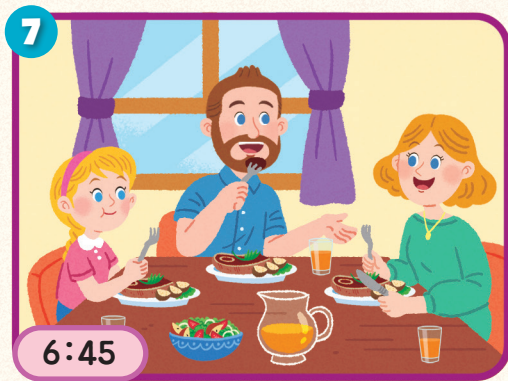
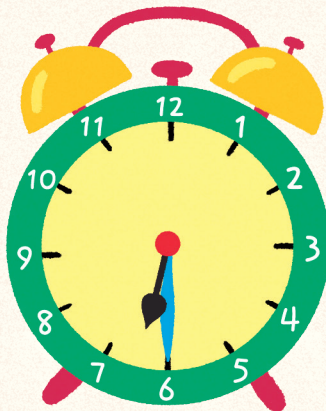


1

Daily Routine

Lesson 1

A Listen, point, and repeat. 2



B Listen and repeat. Then point and say. 3

1 6:00 It's six o'clock.

2 6:05 It's six oh five.

3 6:15 It's six fifteen.

4 6:30 It's six thirty.

5 6:45 It's six forty-five.

6 6:55 It's six fifty-five.

B Listen and number. Then point and say. 4

He goes to bed.



gets up



has breakfast



go to school



eat lunch



finish school



come home



eat dinner



goes to bed

They	come	eat	finish	get up	go	have
She/He	comes	eats	finishes	gets up	goes	has

C Look at A. Listen, point, and repeat. Then ask and answer. 5

What time does she get up?



She gets up at six thirty.



D Listen and chant. 6

What time does he go to school?

He goes to school at eight o'clock.

What time does she go to school?

She goes to school at eight o'clock.



What time do they go to school?

They go to school at eight o'clock.

▶ come(s) home - three thirty

What time does she eat lunch?

What time do they eat lunch?

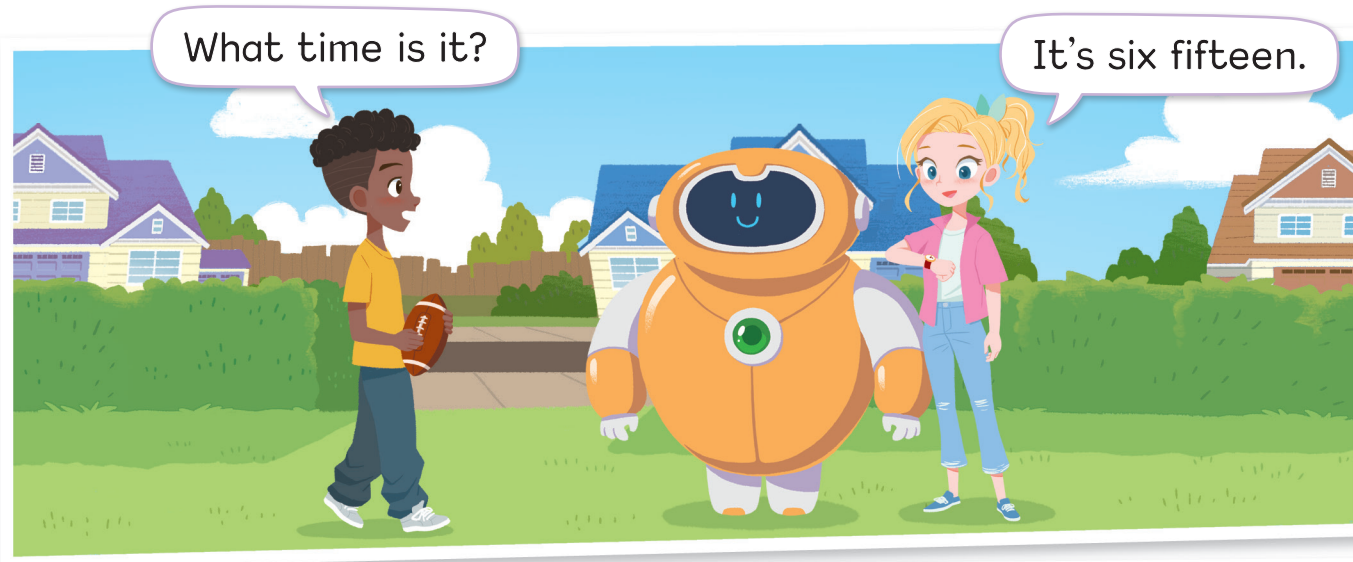
She eats lunch at twelve o'clock.

They eat lunch at twelve o'clock.

Lesson 2

A Listen and repeat. 7

B Watch and act. ▶



Oh no! It's six fifteen already?

Yes. What's the matter?

I should go home.
I'm late for dinner.

I should go home too.

See you tomorrow.

See you at school.

Goodbye.

C Listen and sing. 8

We Should Go Home

It's twelve fifteen. (2x)

We should go home.

We're late for lunch.

It's six fifteen. (2x)

We should go home.

We're late for dinner.



D Play the game. Ask and answer.

What time does he get up?



E Ask and answer with your friend.



What time do you have breakfast?

I have breakfast at 7:30.



A Listen and read.  9

Units of Time



1 minute = 60 seconds

1 hour = 60 minutes

1 day = 24 hours

1 week = 7 days

1 year = 52 weeks

1 year = 12 months

1 year = 365* days



*three hundred sixty-five

B Convert and write the number.

1 3 hours = 180 minutes

$$3 \times 60 = 180$$

2 245 days = 35 weeks

$$245 \div 7 = 35$$

3 13 minutes = _____ seconds

4 360 minutes = _____ hours

5 5 years = _____ weeks

6 312 weeks = _____ years

7 2 years = _____ days

8 60 months = _____ years

Unit Link U1

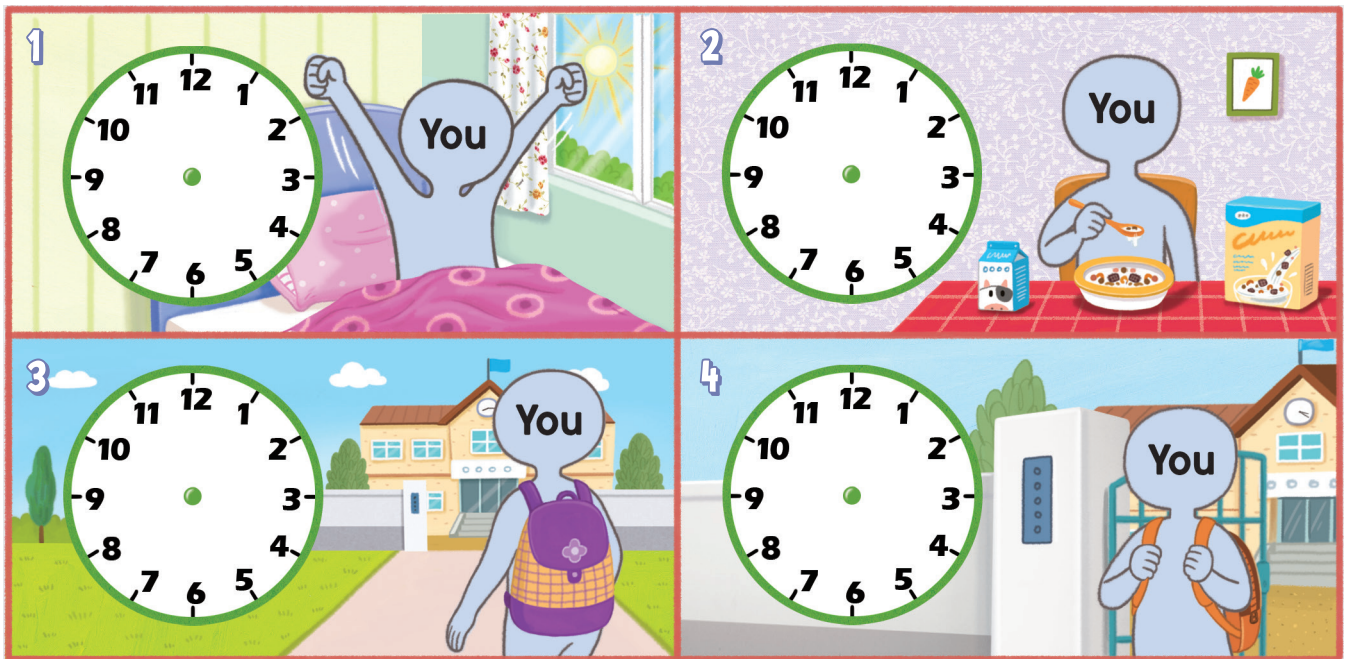
A Look, ask, and answer.

What time does she get up?



B Draw the time. Then ask and answer.

What time do you get up?



C Look at **A**. Listen and answer. 10

1 A - 1

2 A - 2

3 A - 3

4 A - 4

High-Speed Trains

☺ Listen and read. 19

Trains are popular. People like to take the train to get around. Now, there are high-speed trains in many parts of the world. These trains are much faster than regular trains, and they are environment friendly. They use less energy than cars or planes. Let's hop on board and enjoy the ride!



The Shinkansen (Japan) is the first high-speed train in the world.

Speed: 320 km/h (200 mph)

The Eurostar (Europe) runs between London and Paris through Channel Tunnel.

Speed: 320 km/h (200 mph)



*United Kingdom



The Shanghai Transrapid (China) is the fastest train in the world.

Speed: 430 km/h (267 mph)

☺ **Read and circle True or False.**

1 Regular trains are faster than high-speed trains.

True False

2 The Shinkansen is the first high-speed train.

True False

3 Planes use more energy than high-speed trains.

True False

4 The Eurostar runs between the UK and Italy.

True False

5 There is a high-speed train in China.

True False

☺ **Ask and answer with your friend.**

1 Do you like taking the train?

2 Have you traveled on a high-speed train before?

3 Are there high-speed trains in your country?

☺ **Find out more and write about a high-speed train.**

Glue a photo here.

What is the train's name?

Where is it?

What is the speed?
