

# HAND



# HAND

Workbook

1



# Contents

Unit 1 In My Classroom 6

Unit 2 My Things 12

School Link 1 18

Unit 7 Numbers and Shapes 48

Unit 8 At the Store 54

School Link 4 60

Unit 3 On the Farm 20

Unit 4 In the Park 26

School Link 2 32

Unit 9 My Family 62

Unit 10 Different Jobs 68

School Link 5 74

Unit 5 Many Colors 34

Unit 6 Colorful Fruits 40

School Link 3 46

Unit 11 Our Feelings 76

Unit 12 Our Pets 82

School Link 6 88





## Conversation

### A Look, read, and match.



a Hello, Mila.  
Nice to meet you.

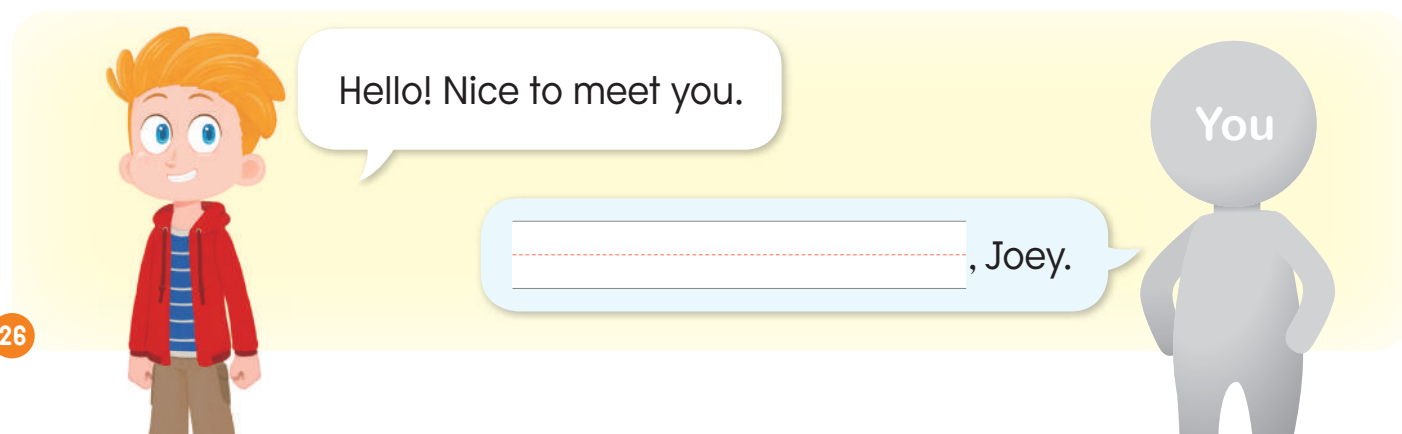


b No, it isn't.  
It's a duck.



c This is my friend,  
Mila.

### B Read and write.



### C Read and write the number.

- 1 Hi      2 name      3 too      4 my

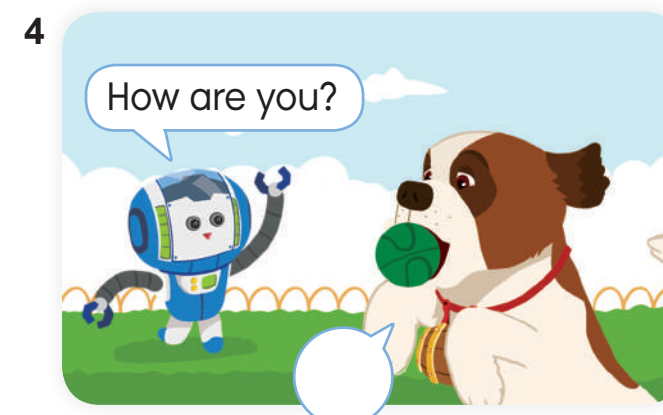
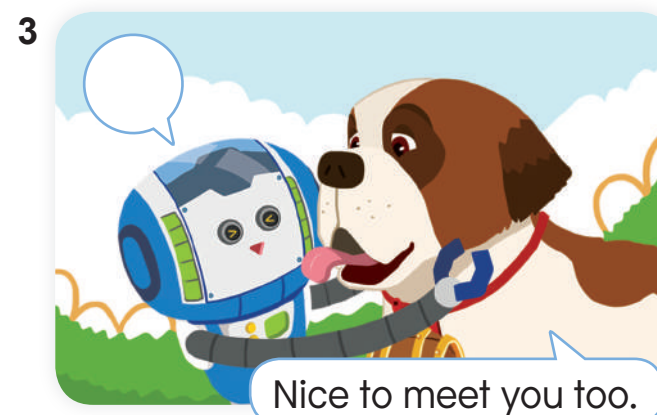
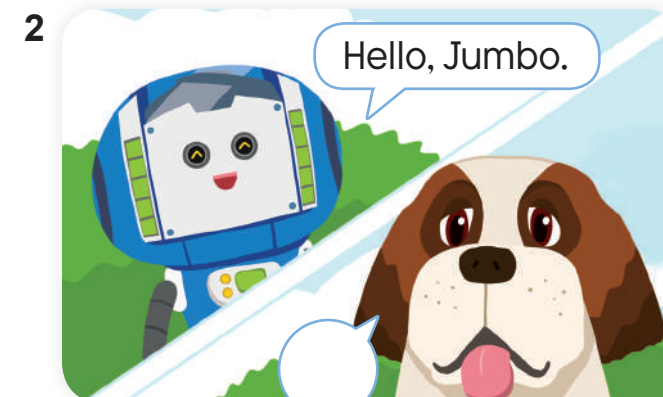
1 This is \_\_\_\_\_ friend. Her \_\_\_\_\_ is Mila.

2 \_\_\_\_\_, Mila. I'm Sam. Nice to meet you.

3 Hello, Sam. Nice to meet you \_\_\_\_\_.

### D Choose and write the letter.

- a Hi, Ditto.      b Nice to meet you.      c I'm great.      d My name's Jumbo.



**A Look and match.**

1



tree

2



pond

3



bench

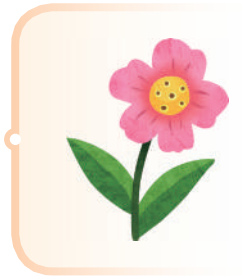
duck

flower

4



5



6



**B Read, look, and write.**

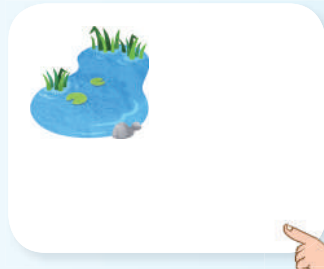
1 What's this?



It's

a \_\_\_\_\_

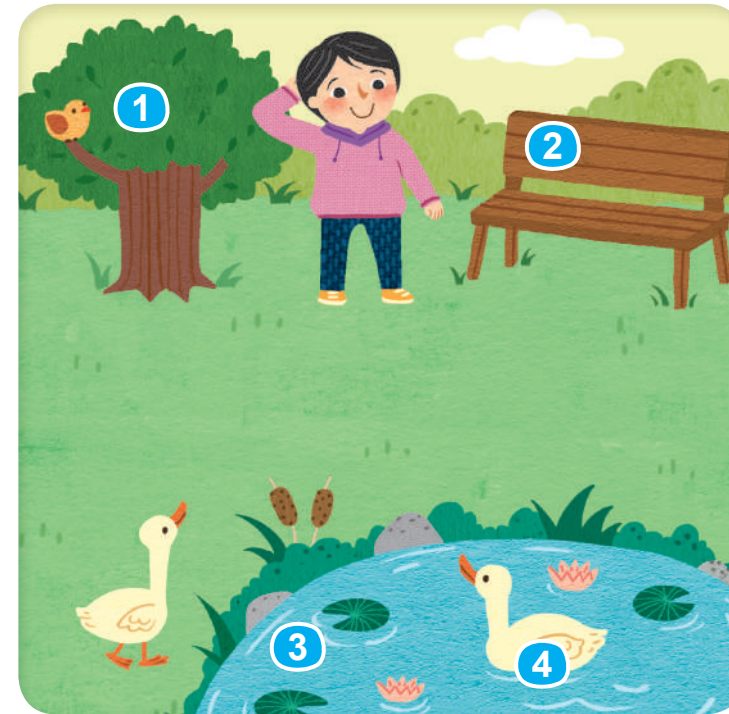
2 What's that?



It's

\_\_\_\_\_

**C Look, read, and check.**



1 Is this a flower?

Yes, it is.

No, it isn't.

2 Is this a picnic table?

Yes, it is.

No, it isn't.

3 Is that a pond?

Yes, it is.

No, it isn't.

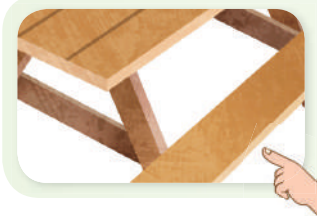
4 Is that a duck?

Yes, it is.

No, it isn't.

**D Look, read, and write.**

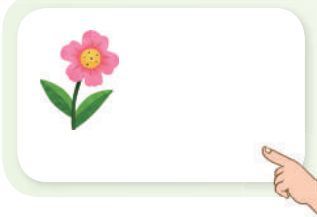
1



Is this a picnic table?

Yes, \_\_\_\_\_

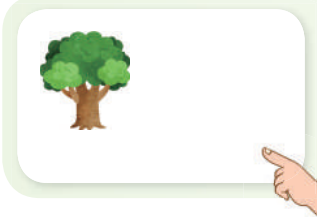
2



Is that a duck?

No, \_\_\_\_\_ It's \_\_\_\_\_

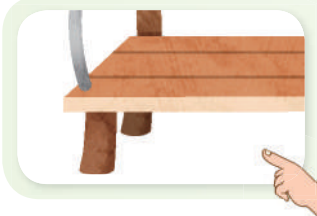
3



\_\_\_\_\_

Yes, it is.

4



Is this a tree?

\_\_\_\_\_



**A** Choose and write the number.

- ① bench    ② picnic table    ③ playground    ④ bike path



I see a \_\_\_\_\_ in the park.



I see a \_\_\_\_\_ in the park.

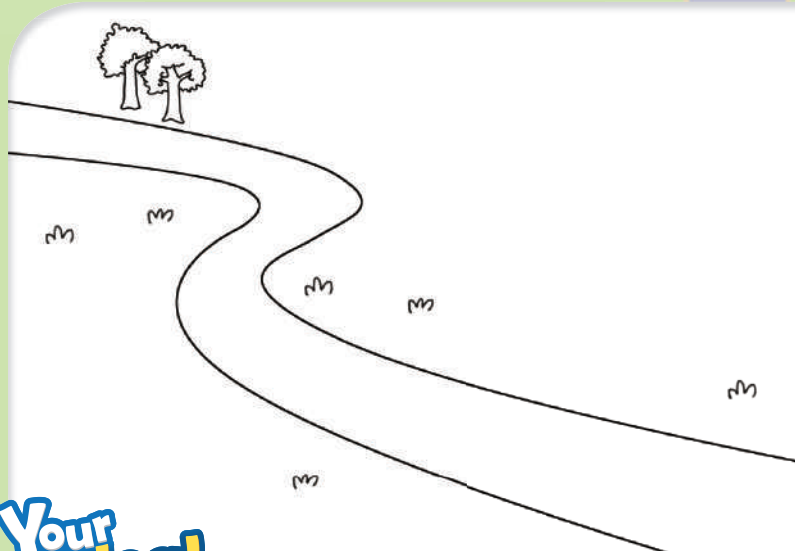


I see a \_\_\_\_\_ in the park.



I see a \_\_\_\_\_ in the park.

**B** Check and draw a park.

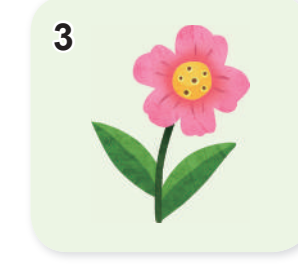


**What's in the park?**

- bench
- picnic table
- flower
- bike path
- playground
- tree
- duck
- pond

Your idea!

**A** Write the words.



① → h o r s e

⑤ ↓

② →

④ ↓

③ →

⑥ ↓

**B** Look, read, and write.



Is this a sheep?

\_\_\_\_\_



It's a tree.

\_\_\_\_\_



# Animals Make Different Sounds

Circle the odd one out.



a neigh b bah c horse



a goat b meh c cluck



a neigh b cluck c chicken



a cow b moo c meh



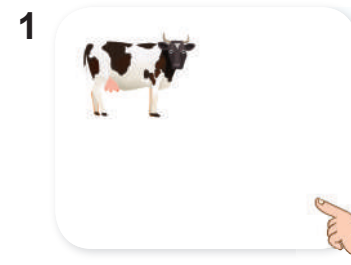
a quack b sheep c bah



a duck b moo c quack

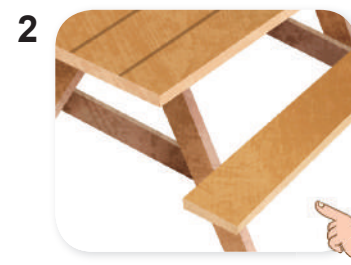
## Grammar Review

A Look, read, and circle.



Is this / that a chicken?

a Yes, it is. b No, it isn't.



What's this / that ?

a It's a picnic table. b It's a flower.

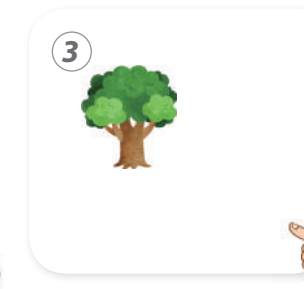
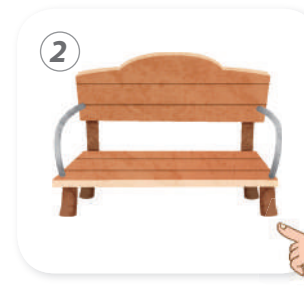
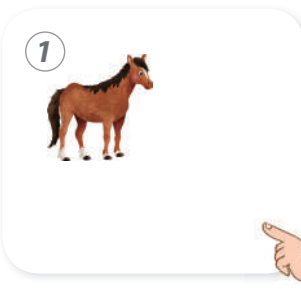
B Look, choose, and write.

What's this?

What's that?

Is this

Is that



1 \_\_\_\_\_

It's a horse.

2 \_\_\_\_\_

It's a bench.

3 \_\_\_\_\_ a tree?

Yes, it is.

4 \_\_\_\_\_ a goose?

No, it isn't. It's a sheep.

