

READING Rocket 3 CONTENTS

Welcome to Reading Rocket 04

Meet the Characters 06

Part 1

Unit 01 **Humans Eat Grass Too** 09
Nonfiction - Lifestyle

Unit 02 **New Clothes** 13
Fiction

Unit 03 **Birdseye's Cool Idea** 17
Nonfiction - Social Studies

Unit 04 **Flight to Adventure** 21
Fiction

Unit 05 **Ellis Island: Gateway to America** 25
Nonfiction - Social Studies

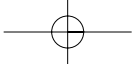
Unit 06 **Scary Fun!** 29
Fiction

Unit 07 **Recharge Your Cell Phone As You Ride** 33
Nonfiction - Lifestyle

Unit 08 **The Climbing Gym** 37
Fiction

Unit 09 **The Story of Rubber** 41
Nonfiction - Science

Unit 10 **The Parrot Who Knew His Address** 45
Nonfiction - Lifestyle



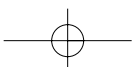
Part 2

Unit 11	Love Like Salt Fiction	51
Unit 12	Moles Nonfiction - Science	55
Unit 13	A Real Christmas Tree Fiction	59
Unit 14	The Peanut Man Nonfiction - People	63
Unit 15	Teddy Bear Goes Ballooning Fiction	67
Unit 16	Earthquakes Nonfiction - Science	71
Unit 17	The Bus Ride Fiction	75
Unit 18	The Many Tricks of the Armadillo Nonfiction - Science	79
Unit 19	Space Operas Nonfiction - Lifestyle	83
Unit 20	What's Your Blood Type? Nonfiction - Lifestyle	87

Part 3

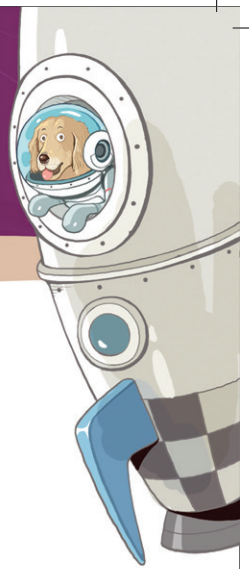
Word List

92



UNIT 01

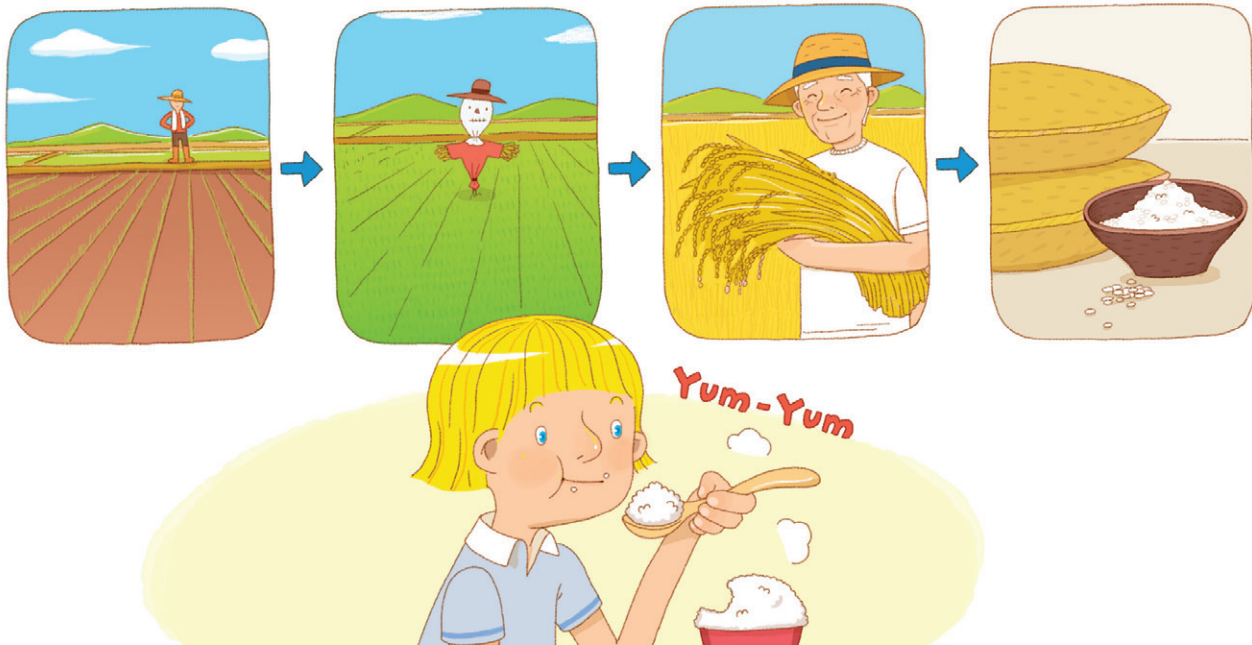
Humans Eat Grass Too



1. Pre-Reading

A Warm Up

- 1 Do you eat rice every day? How much rice do you eat?
- 2 Is rice an important food in your country?
- 3 Do you know how rice is grown? Look at the pictures below and talk about them.



B New Words Write the word next to its definition or picture. Use the words in bold from the story on the next page.

- 1 _____ the number of people who live in a place
- 2 _____ most important and necessary
- 3 _____ many times
- 4 _____ sugar _____ s sweet
- 5 _____ to give something to someone who needs it





Humans Eat Grass Too

Do you eat grass? You may be surprised by the answer. We usually think of grass as food for animals, but humans eat grass too. They eat the seeds. **Rice** is a special kind of grass that has big seeds, and they **taste** good!

Did you know?

There are over 100 different kinds of rice grown around the world.

- 5 Over many years, humans have changed rice to have more and larger seeds, and it has become a very important food. After corn, it is the most popular seed in the world. It is the **basic** food for a large part of the world's **population**, and it **provides** 20% of all the energy eaten by humans.

Read this!

Each grain of rice is a drop of sweat from a farmer. -A saying in the Philippines-

- 10 How **often** do **you** eat rice? Koreans are eating it less often than they used to. In 1980, Koreans ate 132.4 kg per person. By 2006, they were only eating 78.8 kg per person. Koreans are now eating more bread and meat instead of rice.

Even though Koreans now eat less rice, rice is a very important

- 15 part of life for many people around the world. Did you eat some grass today?

173 words



2. During Reading

A Main Idea Circle the main idea of the story.

- a. Rice is a plant.
- b. Rice is an important food for many people.
- c. Rice is delicious.
- d. People eat less rice now.

B Graphic Summary Complete the diagram.

Paragraph	Summary
1	Rice is a special _____ of _____.
2	Rice is a very _____ . It is the second most _____ in the world.
3	Koreans eat rice _____ than they used to.
4	Rice is a very important _____ of _____ for many people around the world.

C Details 1 Check (✓) True or False.

	True	False
1 Only animals eat grass as a food.	<input type="checkbox"/>	<input type="checkbox"/>
2 People eat 20% less rice now.	<input type="checkbox"/>	<input type="checkbox"/>
3 Corn is the most popular seed in the world.	<input type="checkbox"/>	<input type="checkbox"/>
4 Koreans are eating more rice instead of bread and meat.	<input type="checkbox"/>	<input type="checkbox"/>
5 Rice is an important food for people around the world.	<input type="checkbox"/>	<input type="checkbox"/>

D Details 2 Circle the correct answer.

- 1 What is the most popular seed in the world?
a. rice *b.* corn
- 2 How has rice changed over the years?
a. Now it tastes better. *b.* Now it has more and larger seeds.
- 3 In line 10, who does **you** refer to?
a. Koreans *b.* the reader

3. After Reading

A Word Practice Choose and complete the sentence.

rice	tastes	basic	population	often	provide
------	--------	-------	------------	-------	---------

- 1 I will _____ the food for the party.
- 2 Honey _____ sweet.
- 3 I _____ send email to my friends.
- 4 We eat _____ and vegetables every day.
- 5 What's the _____ of your country?
- 6 A person's _____ needs are food, clothing and a house.

B Discussion Write the answers and talk about them with your friend.

- 1 What's your favorite food? _____
- 2 Why do you think Koreans eat more bread and meat now? _____

- 3 What did you eat today? _____
